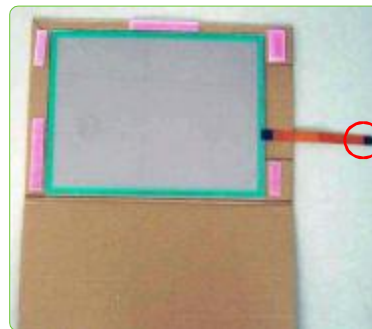
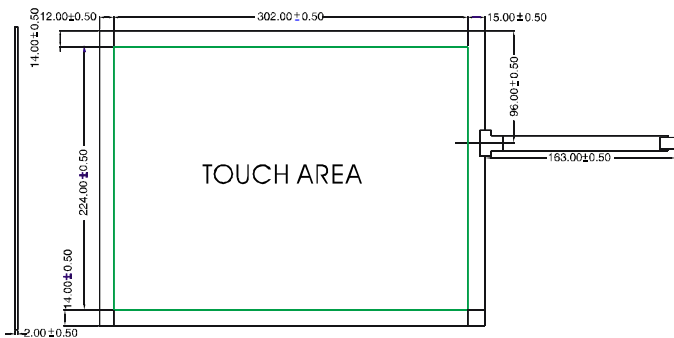
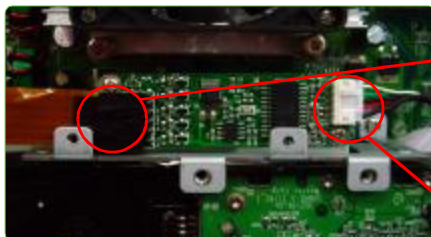


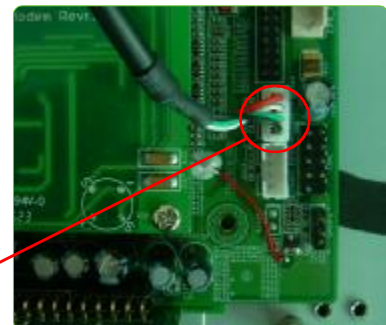
# TOUCH SCREEN INSTALLATION GUIDE



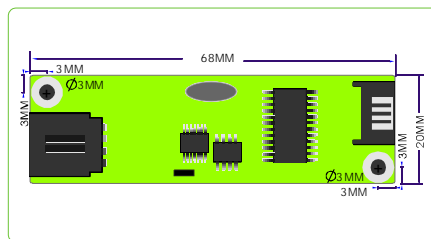
PIN NO.	DEFINITION
1	UL
2	UR
3	COM
4	LR
5	LL



PIN NO.	DEFINITION
1	UL
2	UR
3	COM
4	LL
5	LR



PIN NO.	DEFINITION
1	VCC
2	D-
3	D+
4	GND



## Resistive touch screen controller

### Hardware Specifications

Power Requirements: +5VDC  
 Operating Temperature: 0 C to 50C  
 Storage Temperature: -40 C to 80 C  
 Relative Humidity: 95% at 60 C  
 Protocol: USB 1.1 Low speed  
 Resolution: 2048 X 2048  
 Accuracy Tolerance: Max. +/- 0.5% tolerance  
 Report Rate: Max. 160 points/sec  
 Response Time: Max. 35 ms  
 Panel Resistance: 50 ~ 200 ohm

### Software Features

Calibration: Fast full oriental 4 points position  
 Compensation:  
 1. Accuracy 25 points linearity compensation  
 2. Edge compensation  
 Draw Test: Position and linearity verification  
 Controller Setting:  
 1. Support multiple controllers  
 2. Dynamical add/ remove controllers  
 3. Change controller interface without reboot  
 Languages: Support 10 languages for Windows

### Mouse Emulator:

1. Right/ left button emulation
2. Click/ drawing mode

### Sound Notification:

1. No sound
2. Touch down
3. Touch up

### Double Click:

1. Configurable double click speed
2. Configurable double click area

### OS Support:

1. Windows 95/ 98/ ME/ NT4/ 2000/ XP/ XP Tablet PC edition
2. Windows CE 2.12/ 3.0/ .net/ 5.0
3. Linux (up to Kernel 2.6)
4. MS-DOS: support display resolution: 320x200, 640x200, 640x350, 640x480, 800x600, 1024x768 and 1280x1024
5. iMac 9.0/ OS X

### COM Port Support:

1. Support COM1 ~ COM256 for Windows and Linux
2. Support COM1 ~ COM8 for DOS

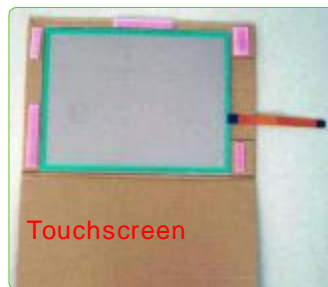
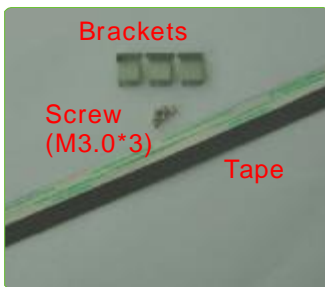
### Display Support:

1. Support monitor/ display rotation
2. Support multiple monitors
3. Support split monitor

## Installation order

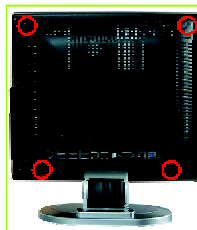
1. Test the epanel if it run normally.
2. Before installing the touch screen, please connect the touch screen controller with motherboard, insure the appearance and use of the touch screen and the touch screen controller. Attention: when install the touch screen, please distinguish the right side, and the cleanness of the touch screen.
3. Demount the rear cover of epanel, fix the touch screen controller on the motherboard, connect one end of USB cable to the USB slot of motherboard, connect the other end to the USB slot of touch screen controller.
4. Fix the touch screen and the LCD together with tape, take off the paper of LCD. Parallel to paste the tape around the inner edge of LCD, and tape of the 4 angles of LCD, adjust the location correctly, check the location of touch screen if it is put on the middle of LCD, then check with front cover, insure the view area is in the middle of LCD screen.
5. Fix the left, middle, and right brackets of touch screen, parallel to paste the tape around the touch screen with tape.
6. Connect the data cable between touch screen and touch screen controller.
7. Install the rear cover and the front cover, the installation finished.

## Installation preparing



## How to remove the rear cover

- 1 Place the computer face down on a flat, soft surface.
- 2 Loosen the four screws at the corner of the rear cover.

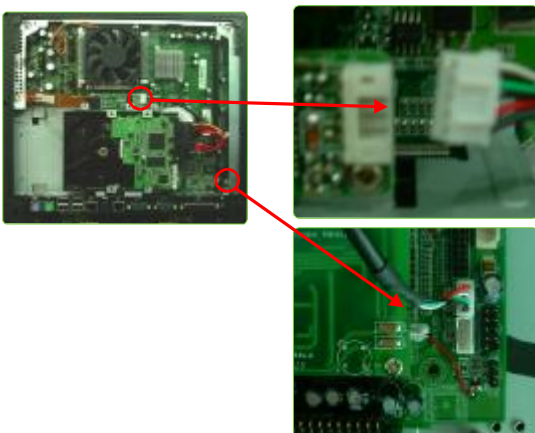


- 3 Lift up the rear cover.

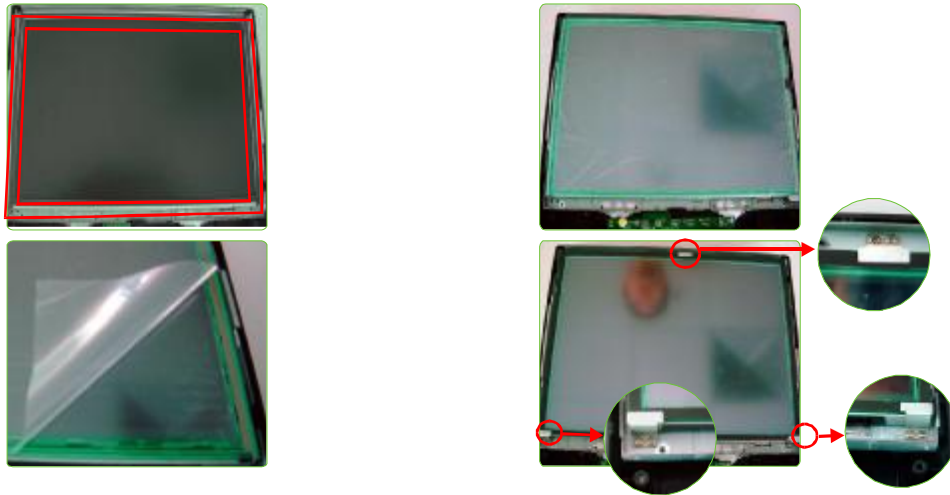


You can begin to install components of touchscreen

- 1 Fix the touch screen controller on the motherboard, connect one end of USB cable to the USB slot of motherboard, connect the other end to the USB slot of touch screen controller.



- 2 Fix the touch screen and the LCD together with tape, take off the paper of LCD. Parallel to paste the tape around the inner edge of LCD, and tape of the 4 angles of LCD, adjust the location correctly, check the location of touch screen if it is put on the middle of LCD, then check with front cover, insure the view area is in the middle of LCD screen.



- 3 Connect the controller and the touch screen data cable.



- 4 Install the rear cover and the front cover, the installation finished.

